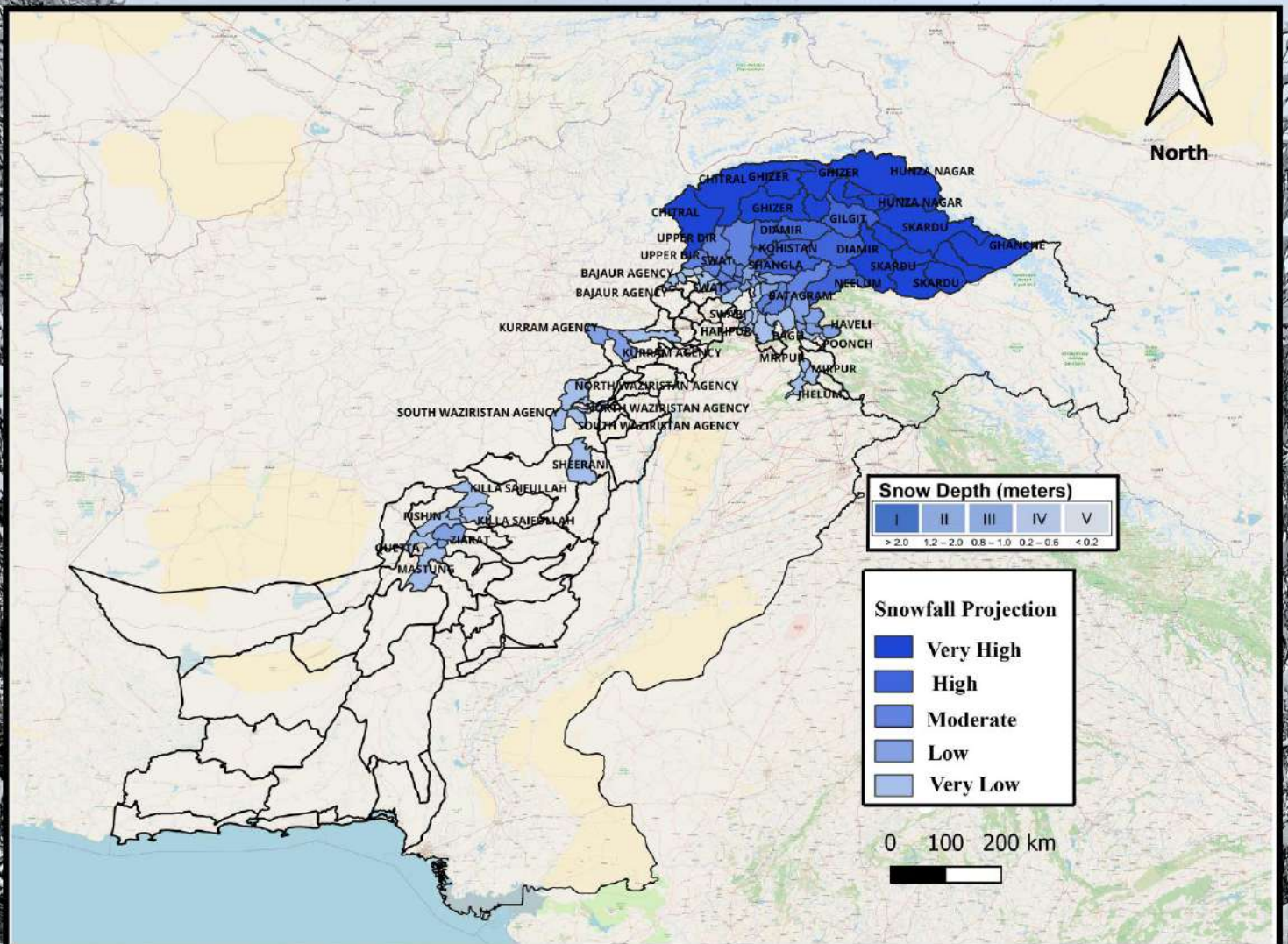




# SNOWFALL SEASONAL PROJECTION (DEC 2023-FEB 2024)

Developed by National Emergencies Operation Center  
National Disaster Management Authority



## SNOW ADVISORY

- The positive phase of ENSO (El-Nino) is expected to prevail, which typically brings above-average moisture to the region. whereas the positive phase of the Indian Ocean Dipole (IOD) is expected to make a transition to neutral at the end of the season.
- This phenomenon is contributing to a heightened influx of westerly disturbances in both the northern and southwestern regions of Pakistan.
- The temperature is anticipated to drop significantly during this period. Therefore above-normal snowfall is expected in Upper Khyber Pakhtunkhwa, Gilgit-Baltistan, Kashmir, Northern areas of Punjab, and certain areas of Baluchistan.

### Potential Impacts:

- Reduced visibility and slippery road conditions are expected during and after the snowfall.
- Travel disruptions, road closures, and snow avalanches may occur in affected areas.
- Power outages may be possible due to the weight of snow on power lines.
- Health-associated hazards (Respiratory illnesses, Cardiovascular problems, Hypothermia, etc.) are likely to occur due to severe weather conditions.

### Precautions:

- Avoid non-essential travel during the snowfall projection periods.
- Stay updated on weather and road conditions through official channels and local news.
- Use caution while driving, and equip your vehicle with snow chains if necessary.
- Dress warmly in layers and cover exposed skin to protect against the cold.
- Eat healthy food and stay hydrated to maintain a healthy diet to support your immune system.
- Report any emergencies promptly to local authorities.